

Kimberly Zerkle



Kimberly Zerkle



Sandy Phillips



Jason King

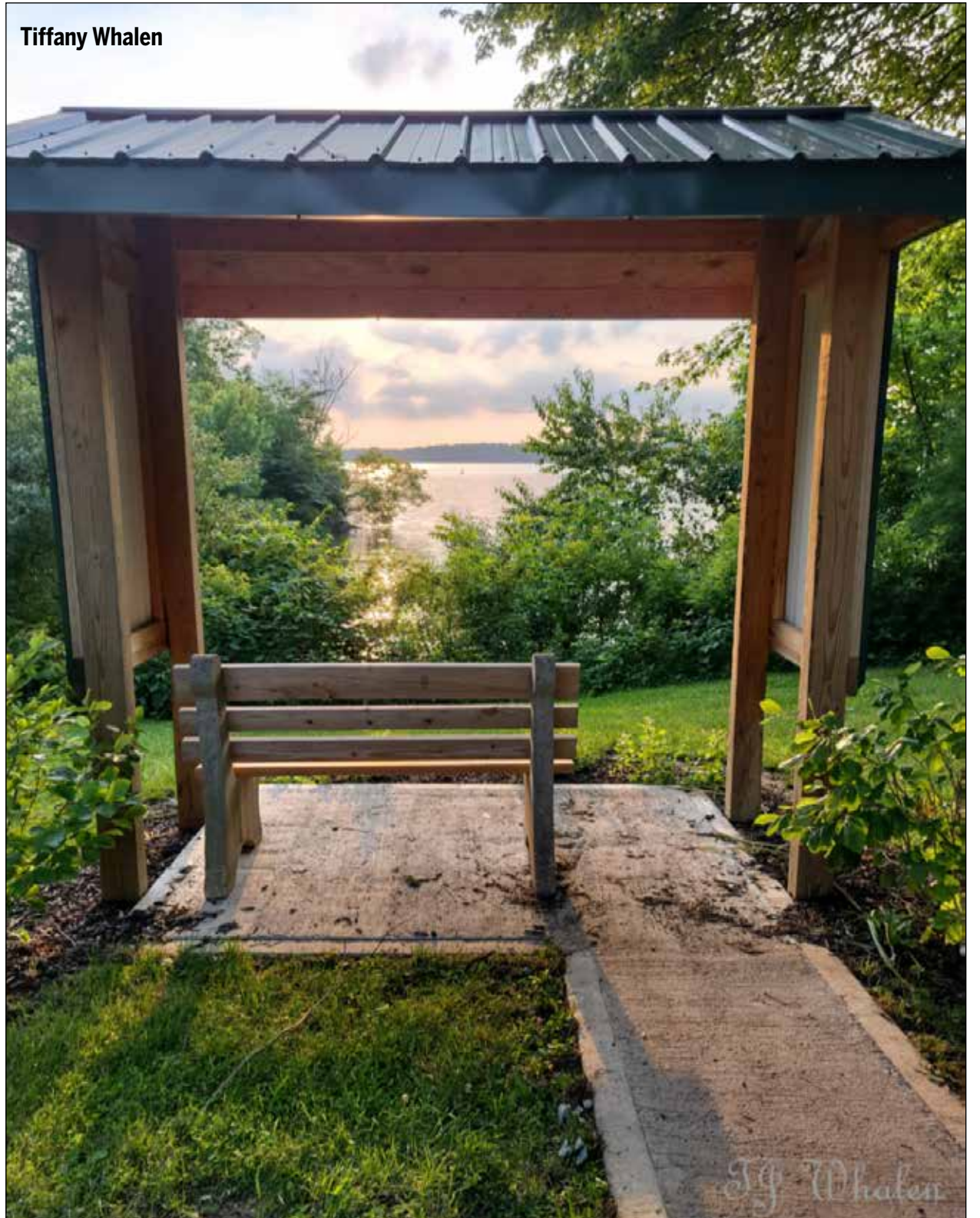


# News Journal 2024 PROGRESS HONORING CLINTON COUNTY

Sarah Mullins



Tiffany Whalen



Elizabeth Huber



Megan Nance



# Southern State Community College



## CONNECT to a CAREER

Southern State offers a variety of **technical and transfer programs** that emphasize real-world skills. We continually review curriculum to align our academic offerings with workforce demand and have recently expanded programs to keep pace in the ever-changing fields of health, human and social services, computing, engineering, business and many more. Check out our list of degree programs below.

### TUITION COMPARISON

Southern State  
Community College

\$5,282

Average University  
Tuition in Ohio\*

\$12,466

\* undergraduate annual tuition for university main campuses  
Source: Fall 2023 Survey of Student Charges Ohio Department of Higher Education

Associate of Arts/Associate of Science

Accounting

Business Management

Business Management - Agriculture

Business Management -  
Real Estate Broker

Computer Technology - Networking,  
Cybersecurity, Programming & Robotics

Early Childhood Education

Electro-Mechanical Engineering Tech.

Engineering: Aviation Maintenance

Human & Social Services

Human & Social Services:  
Chemical Dependency

Law Enforcement

Mechanical Design Technology

Medical Assisting

Nursing

Paraprofessional Education

Follow us on...



800.628.7722

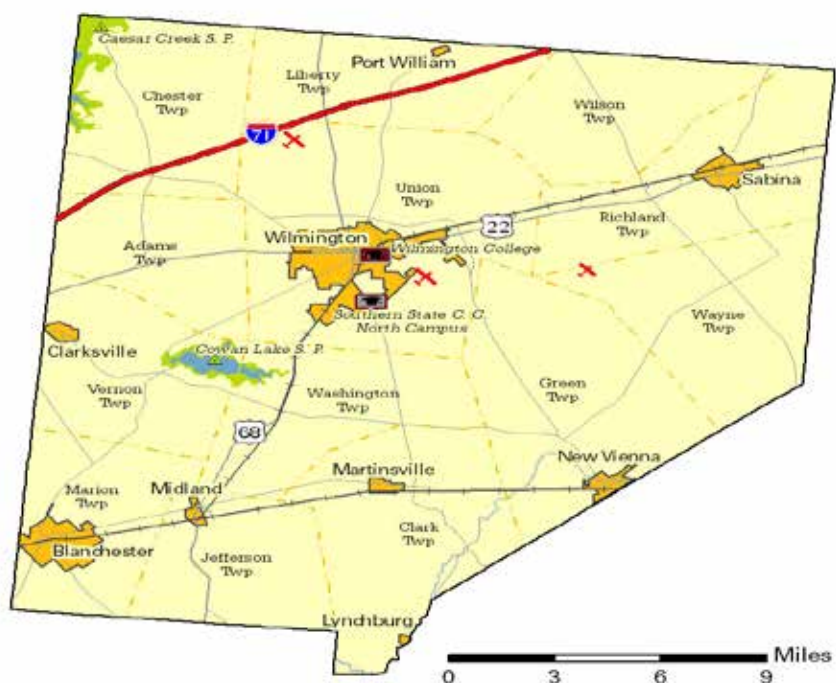
www.sccc.edu



# SOUTHERN STATE COMMUNITY COLLEGE

## Clinton County

**Established:** Act - March 1, 1810  
**2022 Population:** 41,964  
**Land Area:** 410.9 square miles  
**County Seat:** Wilmington City  
**Named for:** George Clinton, Vice President under James Madison



**Taxes**

Taxable value of real property	\$1,010,902,890
Residential	\$638,009,580
Agriculture	\$200,072,200
Industrial	\$26,580,650
Commercial	\$146,240,460
Mineral	\$0
Ohio income tax liability	\$23,920,505
Average per return	\$1,191.68

**Land Use/Land Cover**

	Percent
Developed, Lower Intensity	6.58%
Developed, Higher Intensity	2.34%
Barren (strip mines, gravel pits, etc.)	0.10%
Forest	13.72%
Shrub/Scrub and Grasslands	0.12%
Pasture/Hay	7.36%
Cultivated Crops	69.08%
Wetlands	0.19%
Open Water	0.51%

**Largest Places**

	2022	2020
Wilmington city	12,656	12,665
Blanchester vil. (part)	4,217	4,227
Union twp	3,135	3,139
Sabina vil.	2,478	2,496
Vernon twp UB	2,474	2,464
Washington twp	2,040	2,042
Chester twp	2,020	2,024
Adams twp	2,003	2,007
Clark twp UB	1,582	1,581
Green twp UB	1,403	1,402

# Clinton County over the years, by the numbers

## CLINTON COUNTY BY THE NUMBERS:

### Population

1810: 2,674  
 1820: 8,085  
 1830: 11,436  
 1840: 15,719  
 1850: 18,838  
 1860: 21,461  
 1870: 21,914  
 1880: 24,756  
 1890: 24,240  
 1900: 24,202  
 1910: 23,680  
 1920: 23,036  
 1930: 21,547  
 1940: 22,574  
 1950: 25,572  
 1960: 30,004  
 1970: 31,464  
 1980: 34,603  
 1990: 35,415  
 2000: 40,543  
 2010: 42,040  
 2020: 42,018

### Area Population (2018)

Area	2018 Population	1993 Pop	1920 Pop
County	41,896	37,666	23,036
Blanchester	4,086	4,631	1,671
Clarksville	681	572	410
Martinsville	492	522	397
Midland	278	330	312
New Vienna	1,214	1,024	704
Port William	226	258	294
Sabina	2,454	2,935	1,504
Wilmington	12,403	11,567	5,037
Adams Twp	2,101	1,728	656
Chester Twp	2,405	1,253	1,160
Clark Twp	2,076	1,270	1,179
Green Twp	2,382	1,157	1,321
Jefferson Twp	1,284	1,013	798
Liberty Twp	1,012	693	792
Marion Twp	5,379	1,046	653
Richland Twp	3,557	996	995
Union Twp	3,087	2,192	1,639
Vernon Twp	3,004	1,544	749
Washington Twp	2,078	1,638	948
Wayne Twp	700	763	1,068
Wilson Twp	428	534	749



## FARMING BY THE NUMBERS:

Here are numbers from the Department of Agriculture showing how farming has changed since 1994:

### Number of Farms

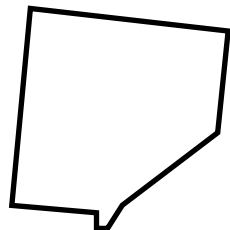
1994: 820  
 2017: 747

### Average Farm Size

1994: 279.3 acres  
 2017: 285 acres

### Total Land in Farms

1994: 229,000 acres  
 2017: 212,769 acres



Crop	1994	2020
Corn for Grain (Acres)	91,000	67,200
Soybeans (Acres)	88,500	103,300
Wheat (Acres)	11,500	4,200
Hay (Acres)	6,900	5,071

Livestock	1994	2017
All Cattle	10,000	4,673
All Hogs	74,000	15,918
All Sheep/Lambs	1,900	1,607

### Cash Receipts from

### Marketings of Farm

Commodities	1993	2017
Corn	\$21,222,600	\$45,542,000
Soybeans	\$20,991,000	\$58,903,000
Dairy/Milk	\$1,768,000	\$1,332,000
Cattle/Calves	\$2,607,000	\$2,239,000
Hogs/Pigs	\$14,833,000	\$4,663,000
<b>TOTAL all crop/livestock</b>	<b>\$79,896.39</b>	<b>\$116,873,000</b>

For Wheat, numbers were withheld in 2017.

### Population by age

Under 5: 2,570  
 5-17 years: 7,229  
 18-24 years: 3,968  
 25-44 years: 9,746  
 45-64 years: 11,483  
 65 and over: 6,951

### Family Type, children under 18

Total families: 11,108  
 Married, with children: 2,723  
 Single dad: 485  
 Single mom: 1,320  
 Married, no kids: 6,580

### Household income

Total households: 16,528  
 Less than \$10,000: 1,052  
 \$10,000 to \$19,999: 1,526  
 \$20,000 to \$29,999: 1,929  
 \$30,000 to \$39,999: 1,974  
 \$40,000 to \$49,999: 1,313  
 \$50,000 to \$59,999: 1,408  
 \$60,000 to \$74,999: 1,855  
 \$75,000 to \$99,999: 2,136  
 \$100,000 to \$149,999: 2,350  
 \$150,000 to \$199,999: 594  
 \$200,000 or more: 391

Source: Ohio Dept. of Development



**SERVING PETS,  
EQUINE, FARM  
ANIMALS, AND  
EXOTICS.**

**(937) 383-0008**

**45 Orchard Rd. - Wilmington, OH 45177**

Visit [www.orchardvetcare.net](http://www.orchardvetcare.net)  
to learn more!

**"Caring for your pets, and livestock as if they were our own!"**



Todd France is one of several ATSG executives who visited a Head Start classroom to read children's books about aviation to pre-school age children.

Submitted photos

# ATSG helps the next generation reach for the sky

## Submitted article

What kid hasn't dreamed of soaring among the clouds in their own airplane, or stood at the airport admiring the size and power of a jumbo jet, or wondered how such large vehicles are able to fly through the air from city to city?

Sometimes, though, it can be difficult for young people to see a path leading from their childhood dreams to a rewarding career in the aviation industry.

The team at Air Transport Services Group have managed to turn their passion into reality, and they understand the importance of inspiring young minds to explore the many possibilities available in such an exciting industry, and the significance of sharing with the next generation the path to success that they charted.

That's why ATSG devotes time and resources to several programs that help introduce young people of all ages to the fascinating world of aviation.

A love of airplanes often begins at a young age. That is why, in 2020, ATSG partnered with Erdman Head Start Center to begin an Executives in the Classroom program, in which company leaders visit pre-school classrooms to read age-appropriate children's books that spark curiosity about airplanes, and to share aviation-related crafts and activities suitable

for young children. This program helps introduce kids to aviation in a fun and engaging way.

ATSG's commitment to primary education continues through its local funding for Dolly Parton's Imagination Library, a program that helps inspire a love of reading by gifting books free of charge to pre-school age children. Carpenter's Helper (group 6) and Llama Llama Red Pajama (group 2) were two of the engaging books that ATSG helped distribute to young readers eager to learn more about airplanes and aviation.

For middle and high school students, ATSG began offering an action-packed aviation camp in 2023. This program offers immersive career experiences that bring the aviation industry to life. Campers accepted into the program explore various facets of aerospace manufacturing, aviation maintenance, safety and flight operations, airport operations, and pilot training. Whether it's marshalling a 100-ton aircraft into its parking spot, getting their hands dirty working with real aircraft parts, or sitting in the cockpit of a Boeing 767 simulator, campers gain a comprehensive understanding of the industry's many roles over the course of the multi-week program.

ATSG also sponsors an annual Girls in Aviation Day, an opportunity for school-aged girls to tour the company's oper-

ations at Wilmington Air Park, and to meet and network with a variety of women professionals working throughout the company. This event is completely planned and staffed by women from around the ATSG network of companies for the local young ladies who attend. Each participant earns a Girls in Aviation Day patch and gains valuable insights into the diverse career paths available in the industry.

From here the journey is just beginning. ATSG welcomes tour groups from local high schools and colleges, and sends speakers out to those same schools, as a way to introduce aviation careers to as many as 5,000 students a year. In addition to helping these young adults visualize a future in aviation, the company actively connects them with programs that can make that future a reality, including internships at ATSG companies and technical training through a partnership with Great Oaks Career Campuses.

Air Transport Services Group believes in nurturing the next generation of aviation professionals. By fostering a passion for aviation early on, providing avenues for exploration and learning, and building pathways to education and internship opportunities, ATSG is helping to shape a future workforce that is grounded in success and reaches for the sky.



A group of school-aged girls toured ATSG's operations at Wilmington Air Park to learn more about the careers of professional women in the aviation industry.



Participants in ATSG's Aviation Camp get up close and personal with cargo freighters at Wilmington Air Park.





WJ file photos

Residents at Ohio Living Cape May can enjoy a maintenance-free lifestyle, with housekeeping and meal services available. This allows them to focus on their personal interests, engage in social activities, or simply relax and enjoy their surroundings. The community's commitment to holistic well-being is evident through its extensive array of amenities, services, and activities.

# Ohio Living Cape May offers unique, exceptional lifestyle

By Serena Hammond  
shammond@wnewsj.com

Ohio Living Cape May, a life plan community in Wilmington, Ohio, offers a unique and exceptional lifestyle for its residents. With a range of spacious independent apartments, exceptional amenities, and personalized services, Ohio Living Cape May provides a community that empowers individuals to live life on their own terms.

For the seventh year in a row, Ohio Living Cape May has been voted a "Great Place to Work" by its employees. Additionally, the community has earned the "Best of Senior Living" award from A Place for Mom for four consecutive years. Furthermore, its skilled nursing unit has been rated a 5-Star by the Centers for Medicare and Medicaid Services (CMS), demonstrating its commitment to providing high-quality care and services.

Residents at Ohio Living Cape May can enjoy a maintenance-free lifestyle, with housekeeping and meal services available. This allows them to focus on their personal interests, engage in social activities, or simply relax and enjoy their surroundings. The community's commitment to holistic well-being is evident through its extensive array of amenities, services, and activities.

Ohio Living Cape May has also hosted a range of special events and activities, including a guest speaker appearance by Marty Brennaman, the legendary voice of the Cincinnati Reds. Residents have also enjoyed live singing performances and other engaging events. In addition, the community hosted a watch party for the solar eclipse, allowing residents to witness this rare phenomenon together. Book and art shows have also been featured, providing a platform for artists and authors to showcase their work.

The community has also wel-

comed several notable guest speakers, including the mayor of Wilmington, Pat Haley, who shared insights on local issues and initiatives. These events have helped to create a vibrant and engaging community atmosphere, where residents can connect with one another and enjoy a range of intellectual and cultural pursuits.

The community's amenities are designed to cater to various interests and passions. From exercise classes and fitness centers to woodworking shops and computer centers, residents have access to an array of purposeful and elevated activities and resources. The campus center serves as a hub for community gatherings and events, while multiple dining venues offer opportunities for socializing and enjoying delicious meals.

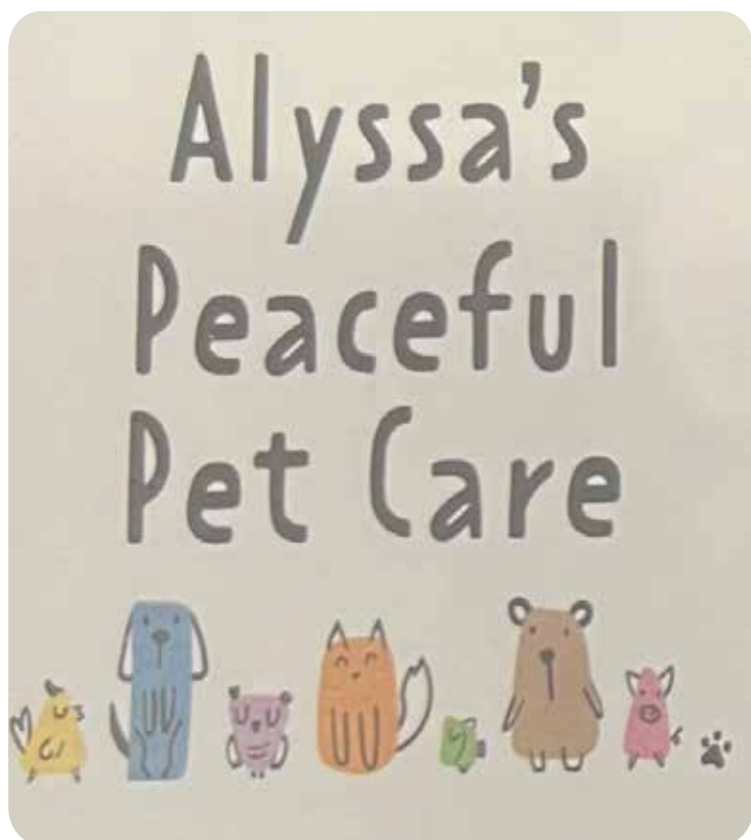
Ohio Living Cape May's commitment to education and wellness is evident through its partnerships with Wilmington College. Residents can participate in educational programs and exercise classes, further enhancing their intellectual and physical well-being. The community's recreational and social activities, including opportunities for pets to be part of the community, foster a warm and welcoming atmosphere.

Ohio Living Cape May takes pride in being a people-first employer, valuing the contributions of its dedicated team members. The organization recognizes its remarkable work and supports their personal and professional growth, fostering a workplace that promotes quality of life and wellness.

If you're ready to discover a fulfilling career or embark on an extraordinary retirement journey at Ohio Living Cape May, call today to schedule a tour. This thriving community invites individuals to embrace a lifestyle that prioritizes service to others, personal growth, and a profound sense of purpose.




## Staycation fun for your best friend!



Here to provide a peaceful and calming pet sitting experience for your beloved pets.

Let me look after your pet at your home while you're on vacation!

 **Alyssa Plymire, Owner**  
513-582-3678  
peacefulpetcare@gmail.com  
lysspeacefulpetcare.com



**Limited Availability Move-In Special!\***  
**\$1,000 OFF PER MONTH FOR THE FIRST 12 MONTHS TOTAL OF \$12,000!**

# Spring into a New Home with Endless Possibilities!

Ohio Living Cape May's all-inclusive Cambridge apartments allow you to enjoy a maintenance-free lifestyle with housekeeping and a meal plan included.

\*Special ends June 30, 2024. This offer is for apartments only.

**Call 937.382.2995 to learn more!**

**Please ask about our Veterans and Church Employee Honorable Service Grants, too!**



**Ohio Living**  
Cape May





# LEASE+PLUS

**No other company in the world bundles aircraft leasing, airline solutions, engine power, maintenance, and logistics solutions.**

**LEASING  
FLYING  
SUPPORT SERVICES**

BOEING 767

AIRBUS A330

AIRBUS A321

## CONVERTED FREIGHTERS

*with operator-driven design features available for lease*



learn more about our freighter leasing program

145 Hunter Drive | Wilmington, Ohio 45177

*We're serious about air cargo, but we also like to show our inner child!*

### Summer Aviation Camp

We host an immersive STEM learning camp at our corporate headquarters, targeting youth in grades 6-12.



### Girls In Aviation Day

We invite girls from the surrounding area to spend the day exploring our facilities to learn more about possible careers in aviation.



### Aerospace Manufacturing Tours

We offer exclusive tours for middle school students introducing them to the exciting world of aerospace manufacturing!

They follow the journey of an aircraft part from its initial design to its final installation. Our tours offer a unique, educational adventure that inspires and informs, providing a rare glimpse into the world of aerospace engineering and manufacturing.



*Contact us to ignite your students' curiosity and let them explore the future of flight!*



atsginc.com

# Southern State Community College: A catalyst for Clinton County's growth

By **Serena Hammond**  
shammond@wnewsj.com

Southern State Community College (SSCC) has made significant contributions to the surrounding areas, including Clinton County. Recently, SSCC was honored with the 2024 Family Choice Award in the category of Local Community College. The nominations were based on written responses, with the top three mentions advancing to the finals, and Southern State emerged victorious.

Nicole Roades, president of Southern State Community College, emphasized the pivotal role community colleges play as often overlooked economic engines within the communities they serve.

"We serve over eight million students in both credit and non-credit spaces, making a substantial impact across the nation," she said.

Southern State prides itself on being the community's college. Whether a student is graduating from one of the area's high schools, returning to college for better job prospects, or finishing something started long ago, Southern State provides an affordable, accessible, high-quality education.

"Students can pursue a two-year technical degree that can put them directly to work, or a two-year associate's degree that can take them to another college for their bachelor's degree – all at a fraction of the cost of a larger university. With small class sizes, hybrid learning options, and friendly and knowledgeable faculty and staff, Southern State strives to be the first and best choice in the area," explained Roades.

Southern State offers associate degree programs in business, computer technology, engineering, education, human and social services, health sciences, and law enforcement. Additionally, it provides one-year certificate programs in fields such as accounting, aviation (general, airframe and powerplant), medical assistant technology, phlebotomy, practical nursing,

and real estate. Students also benefit from bachelor's degree completion opportunities through on-site partnership agreements, adult basic literacy courses, and workforce training programs.

Roades emphasized four key aspects that set community colleges apart: accessibility, affordability, transferability, and responsiveness to workforce needs. She noted that Southern State operates on an open enrollment basis, welcoming students without stringent admission criteria.

"Accessibility is important. We are an open enrollment institution. We don't require an ACT, SAT, or a GPA. You come as you are," said Roades.

"In terms of affordability, our average tuition in Ohio stands around \$5,100, making education accessible and cost-effective," she added.

Comparing this to the average tuition of four-year institutions, which exceeds \$16,000, Roades highlighted the financial advantage of starting at a community college.

Addressing transferability, Roades pointed to Ohio's OT36 initiative, which ensures the seamless transfer of 36 credits to any college within the state, facilitating students' educational journeys.

Furthermore, Roades emphasized the critical role community colleges play in addressing workforce needs. Southern State contributes through rigorous programs tailored to meet industry demands, benefiting both students and employers.

In her presentation, Roades highlighted the economic impact of Southern State within its five-county area, amounting to \$45 million in 2022 alone.

"We serve about 170,000 students total in the state. Our county region is Adams, Brown, Clinton, Highland, and Fayette counties," Roades added.

This impact includes employment opportunities generated by the college and the contributions of its graduates to the local economy.

In Clinton County specifically, Southern State fos-



ters strong relationships with the community, employing 30 citizens from the county and serving approximately 260 Clinton County students. Additionally, Roades underscored the college's partnerships with local schools and universities, emphasizing their commitment to facilitating seamless transitions for students.

Southern State Community College stands as a testament to the profound impact community colleges can have on their localities, driving economic growth, educational advancement, and workforce development in Clinton County and beyond. If you are considering furthering your education or seeking new career opportunities, Southern State Community College offers a comprehensive and accessible pathway to achieve your goals. With its robust programs, supportive faculty, and strong community ties, SSCC is dedicated to helping students succeed and communities thrive.



Students at Southern State Community College benefit from small class sizes, hybrid learning options, and knowledgeable faculty, making SSCC a top choice for affordable and accessible education. Courtesy photos





# Wilmington College embarks on new era with Cockerill as president

By Randy Sarvis  
WC Senior Director of Public Relations

Wilmington College chose one of its own to lead the institution in its ongoing mission to educate, prepare and inspire students for lives of service and success. Dr. Coreen “Corey” H. Cockerill became the College’s 20th president in early March after serving 11 months in the interim role.

Cockerill brings her experience of 16 years on the faculty — she holds the rank of full professor — and several years in the administration as the area coordinator for agriculture and assistant dean of academic affairs. She will become the College’s first inaugurated female president during the formal investiture ceremony this coming year.

Board of Trustees Chair Daniel Buckley said at the time of her appointment, “Corey understands our students, our strengths and our Quaker heritage. The excitement and optimism on campus are palpable. Corey Cockerill is the right person for our beloved Wilmington College!”

“It is an incredibly important time for Wilmington College as we work collectively on a vision for the future,” Cockerill said. “We are fortunate to move into this space, inspired and with wheels already in motion. With all the challenges facing higher

education today, we’ve had great success finding paths forward simply by asking the question, ‘What is in the best interest of Wilmington College and its students?’ Our mission and core values give us focus.”

The academic year 2023-24 has been memorable for numerous other reasons. The College’s swing in momentum has been manifested through numerous instances of student success, new programs and initiatives, and external support.

Nearly half of the student body is engaged in athletics and, most recently, five members of the track and field teams qualified for the National Championships and came home with a national championship and six All-American designations. The men’s team placed eighth in the nation.

Also, this year, 80 student-athletes earned Academic All-Ohio Athletic Conference status.

The opportunity to study agriculture continues to draw the most students to the College of any academic area. That vibrant curriculum saw the Aggies’ 66th annual Judging Contest attract 1,400 high school students to hone their skills in agronomy and judging equine, dairy and general livestock.

Speaking of livestock, gifts resulted in a dozen new Hereford cattle purchased for the College Farm. Dr. Javonne Mullins, assistant profes-

sor of agriculture, said the breed was selected due to its reputation as especially good-natured. “Some breeds can be really aggressive, but Herefords are known for being docile with a calm working temperament — and they’re good mothers too!”

The College’s equestrian team fields a whopping three-dozen members — indeed, one of the smallest schools in the International Horse Show Assn. has arguably the largest team. It sent another competitor to the national championships this spring. Also, the equine program has had five horses with world-class pedigrees donated in the past 18 months. “These horses are tremendous assets to our program,” said Daren Wright, program director. “How many times can college students ride a world champion? It just doesn’t happen.”

In 2024, the College returned to the mission-related work of teaching incarcerated students. Summer classes started in May at Dayton, Lebanon and Warren correctional institutions. WC has been a trailblazer in such endeavors, which WC started in 1967. Cockerill noted, “Although programs and funding sources have changed, the goals of our prison program remain the same: decrease recidivism, improve the job prospects of returning citizens and provide

meaningful personal development for incarcerated persons.”

Also, this spring, WC graduated 239 students in two bachelor’s and three master’s degree areas. Keynote speaker Noris Price lauded education as a “game-changer” and honorary degrees were conferred upon her and 18th President Jim Reynolds.

• Also, the inaugural cohort of students engaged in WC’s new Master of Science in Occupational Therapy program received their master’s hoods at Commencement. The nascent program earned national accreditation in December.

The Ohio Tree City USA Awards Program named Wilmington College a Tree Campus USA. Trees and green space are integral to the college experience, especially at WC. Indeed, they make the campus more livable, healthy and beautiful, benefiting both the campus community and the environment.

Other highlights include:

- The College received a Streamkeepers grant to research water quality in area streams and recommend buffer crops to plant between farmland and the waterways that will mitigate the introduction of various pollutants.
- Wilmington College students have increased academic offerings available with the emergence of several incubator



Submitted photo  
Corey Cockerill chats with students (from the left) Kaleb Easley, Mckenzie Jolliff and Jase Edmunson while walking on campus.

programs starting this fall. They include public health, cybersecurity management, sports nutrition and logistics & supply chain management. These courses will be taught in a hybrid modality by a combination of WC faculty and instructors nationwide.

The College continued to serve as a cultural mecca in the community. In 2023-24, it presented four programs in its Chamber Music Series, three WC Theatre productions, the College-Community Summer Theatre presentation of the musical, Chicago, choral and instrumental concerts, public lectures, the Quaker Tank entrepreneurial competition and exhibits in Harcum Art Gallery and the Meriam R. Hare Quaker Heritage Center.

• Some 80 individuals and teams displayed their research via posters and other presentation media while transforming the normally athletics-oriented venue, Fred Raizk Arena, into a strictly academic setting for the 13th annual Student-Faculty Research Forum.

• The College received a \$400,000 Behavioral Health Workforce Development grant designed to enhance academic efforts in the social work field with the goal of eventu-

ally seeking formal program accreditation. The grant, which was issued by the Ohio Department of Higher Education (ODHE), is fostering a regional partnership hub among Wilmington College, Southern State Community College and Cincinnati State Technical and Community College.

• WC’s plans for installing individual heating/cooling units in two residence halls this summer received a financial jolt of adrenaline when it received a \$250,000 state grant for energy efficiency retrofits and upgrades. The College’s project is underway for placing individual heating/air conditioning units in Austin and Pickett residence halls. The HVAC, lighting and window cooling unit upgrades are expected to yield 55.3 percent in utility savings.

The College celebrated its historic Quaker affiliation in many ways throughout the year. One was the fruition of a joint project with local Quakers involving the production of namesake plaques for campus buildings. Indeed, many WC facilities are named after prominent Friends from the College’s 153-year history.

## Alyssa’s Peaceful Pet Care aims to make your loved companions more comfortable



Submitted photo

Alyssa Plymire founded Alyssa’s Peaceful Pet Care in August of 2022.

### Submitted article

Alyssa’s Peaceful Pet Care was founded in August of 2022 by Alyssa Plymire, formerly known as Boothe. Alyssa is originally from Morrow, Ohio, but has resided in Wilmington, Ohio since 2012.

Alyssa’s Peaceful Pet Care is a pet sitting service where the main priority is to make your loved companions more comfortable by staying

at their home. There are some animals that love to board at local kennels, but there are a handful of others that get very stressed over that thought.

Along with mainly providing pet care services, there are additional services offered such as nail trims, baths, anal glands, medicating animals, transporting animals, and delivering medications or food to your house.

Alyssa has around eight years of experience with animals, which ranges from working in retail pet stores to working at a local vet clinic in Wilmington. Alyssa is also a 2016 Wilmington High School graduate, graduated from the Vet Tech Institute of Columbus in 2018, and has earned her registered veterinary technician license in the beginning of 2023.

# BUSH

## AUTO PLACE



1850 Rombach Ave.  
Wilmington, OH 45177

Phone:

937-382-2542

**Home of the  
lifetime  
powertrain**

# Bringing out the best in Clinton County

## Submitted article

The Clinton County Foundation's mission is to inspire and cultivate charitable giving in Clinton County to build a thriving and resilient community where people want to live, work, and grow.

We belong to the community and thrive on supporting the people, projects, and places that make our piece of Ohio unique, resilient, and full of potential. As a neighbor to some bigger cities, we need to support each other and provide for our own needs. The Clinton County Foundation functions as a conduit for local solutions to local issues, on a mission to continually improve and enhance our County and its individual communities (villages, townships, school districts, etc.). Thanks to our commitment to excellence and professionalism since 1985, our financial resources and resolve are stronger than ever.

Whether managing funds and major endowments or enabling nonprofits to focus on advancing their causes, we strive to support education, health and wellness, and economic develop-

ment in our county because when we give our best, we bring out the best in each other.

In 2023, the Foundation awarded a total of \$1,045,280 to support a variety of projects:

· **\$423,734 in Economic Development**

for such projects as the Friends of Clarksville's renovation of a basketball court and the Murphy Theatre for equipment, programming and marketing.

· **\$308,060 in Education**

for such projects as the Harvest of Gold's technology enhancements to a tutoring program, and numerous scholarships supporting traditional students and adult learners.

· **\$307,487 in Health & Wellness**

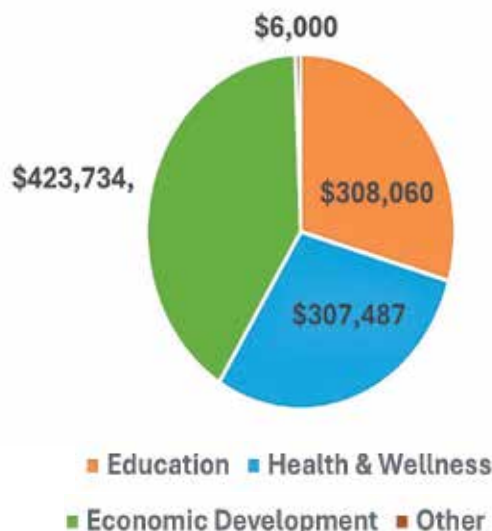
for the Village of Blanchester's community gym renovation and United Way's support for mental health first aid training.

As a team of local citizens, the Clinton County Foundation partners with local government officials, nonprofits and generous donors, to fulfill our commitment to stewarding and investing charitable gifts, working at the intersection of generosity and opportunity.

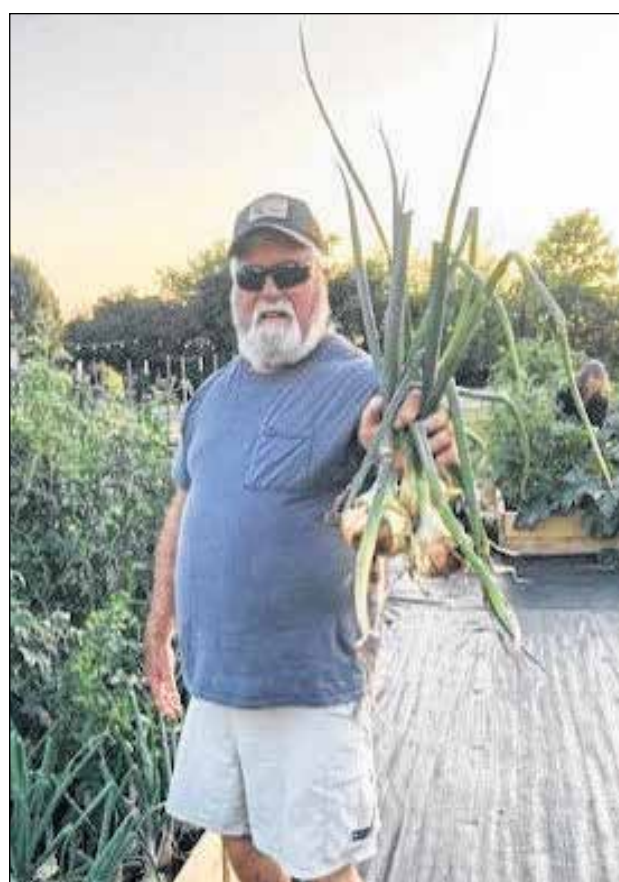


## Clinton County Foundation

2023 Grants Awarded



As a team of local citizens, the Clinton County Foundation partners with local government officials, nonprofits and generous donors, to fulfill our commitment to stewarding and investing charitable gifts, working at the intersection of generosity and opportunity.



### Wilmington College

HANDS-ON LEARNING. HANDS-ON LIVING.

SCHOLARSHIPS AND FINANCIAL AID AVAILABLE

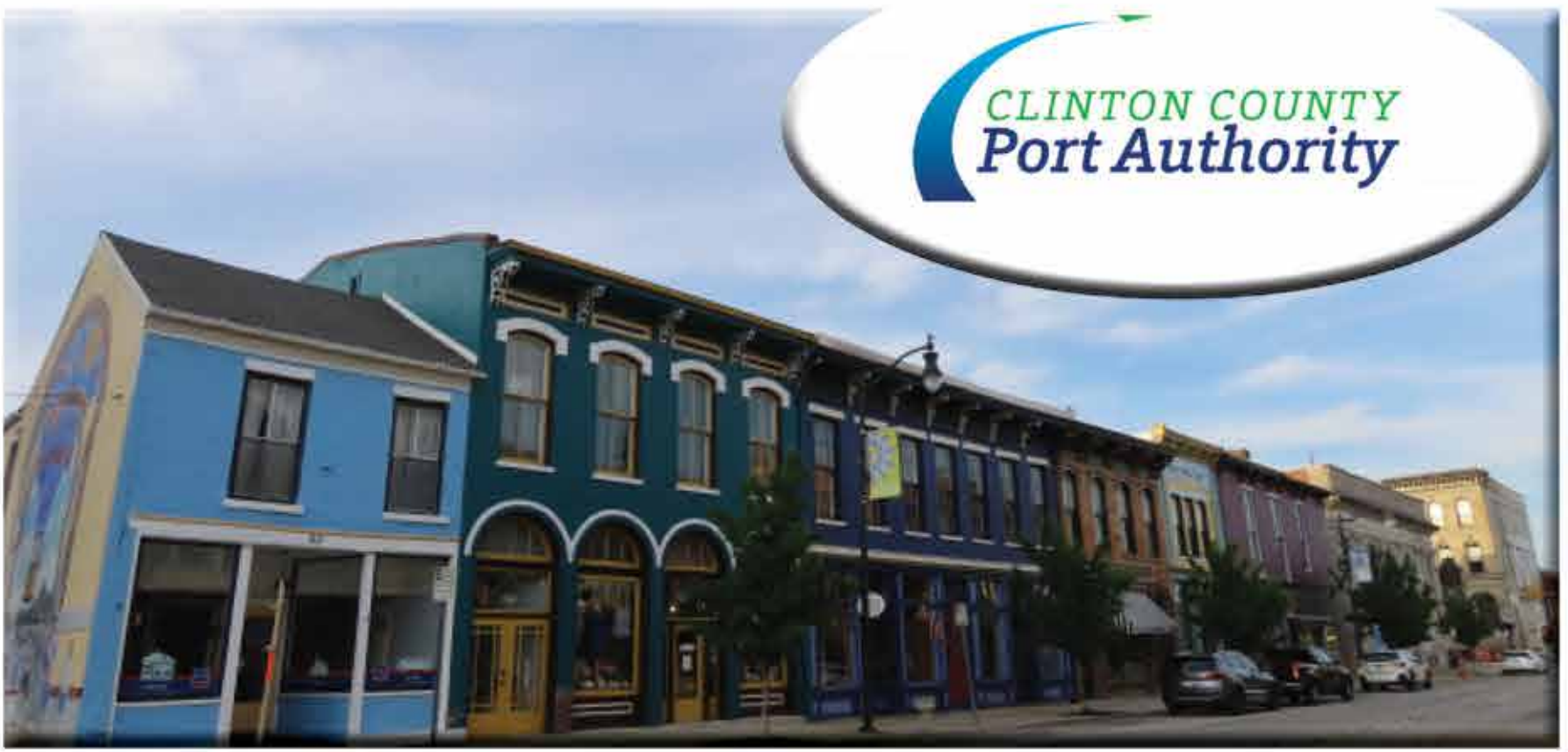
NCAA DIVISION III ATHLETICS

EXPERIENTIAL LEARNING THROUGH INTERNSHIPS AND OUT-OF-CLASSROOM ACTIVITIES

OPPORTUNITIES TO RECEIVE ACADEMIC CREDIT FOR INTERNATIONAL TRAVEL

TWO MASTER'S DEGREE PROGRAMS

WWW.WILMINGTON.EDU



The Clinton County Port Authority is the lead economic development agency for Clinton County. The Port Authority coordinates local, regional and state efforts to encourage investment in the County that results in the retention and expansion of existing businesses, while also working to attract new business.





Learn more - [ChooseClintonCountyOH.org](http://ChooseClintonCountyOH.org)

The Port Authority is here to assist with your business growth and development in Clinton County. From the smallest to largest businesses, the Port Authority's economic development team is the local resource, and can assist you in creative funding and financing solutions, tax incentives and grants, as well as assistance in workforce development.



Working with JobsOhio and the Dayton Development Coalition, the Port Authority helps to focus resources and opportunities on Clinton County.

 Clinton County Port Authority  
Wilmington Air Park

 @CountyPort  
@WilmingtonAirPk



The Wilmington Air Park, the largest job center in Clinton County, is owned and operated by the Clinton County Port Authority. It is an integrated aviation and logistics business park located on 1,900 acres with nearly three million square feet of industrial, office and hangar space. The Air Park is the highest volume cargo airport in Ohio, and is ranked 22nd in the U.S.



It has been recognized as one of the top three cargo-focused airports in the country.

Fourteen businesses operate out of the Air Park employing over 4,600 people.

Development sites are available at either end of the airport allowing continued expansion with access to this infrastructure asset.

Strategically located - within the State of Ohio, and in the region - the Wilmington Air Park is accessible easily by interstate and is within one hour's flight time of 60 percent of the U. S.



Learn more - [WilmingtonAirPark.com](http://WilmingtonAirPark.com).

**ROCK  
THE  
BLOCK**  
WILMINGTON, OHIO

School Supply Campaign

*Drop off Box by the stage*

**Teachers  
ROCK**

Donate school supplies at any of the summer concert series events and receive a FREE T-Shirt

**DATES: JUNE 7, JUNE 14, JUNE 28, JULY 12,**

**ROCK THE BLOCK WEEKEND JULY 26 & 27**



Submitted photos

Happy Cows Creamery is part of New Horizon Farm, where the family has owned and operated the Clinton County dairy for six decades. They milk 50 cows, feed 75 head of young stock and operate a hay and grain operation on the 300-acre farm. In May 2020, an on-farm retail site was also opened when Happy Cows Creamery started bottling its own milk direct to consumer.

## Happy Cows Creamery receives grant to expand on-farm processing

### Submitted article

Located in New Vienna, the last Grade A dairy in Clinton County has received a \$97,000 grant from the Dairy Business Innovation Alliance (DBIA) to expand its manufacturing facility on its farm.

“We are incredibly grateful to the DBIA for selecting our project out of the hundreds they received this year,” said Jackie Bickel, one of the owners of Happy Cows Creamery. “This funding will allow us to increase our production volume, milking cows in the morning and having a farm-fresh product by the afternoon for our customers.”

Happy Cows Creamery is part of New Horizon Farm, where the family has owned and operated the Clinton County dairy for six decades. They milk 50 cows, feed 75 head of young stock and operate a hay and grain

operation on the 300-acre farm. In May 2020, an on-farm retail site was also opened when Happy Cows Creamery started bottling its own milk direct to consumer.

“We’re a second generation farm,” said Donald Bickel, “with hopes of seeing the third generation continue the family legacy. The funding from this grant gives us the resources we need to expand our operation to meet consumer demand.”

Since the Creamery began in 2020, growth has exceeded the expectations of both Donald and Jackie. Now, the Bickels have the means to create a separate retail space on the farm, add a 135-gallon vat pasteurizer and a 1,000-gallon cooling tank. Their existing 45-gallon vat takes three to four hours to process a batch of milk and the new equipment will increase production to 135 gallons in less than two hours.

“With most of the milk being processed by me and two part-time employees, this is a game-changer,” said Donald. “There are days when customers catch me sleeping in the creamery because I’ve bottled milk overnight to keep up with orders.”

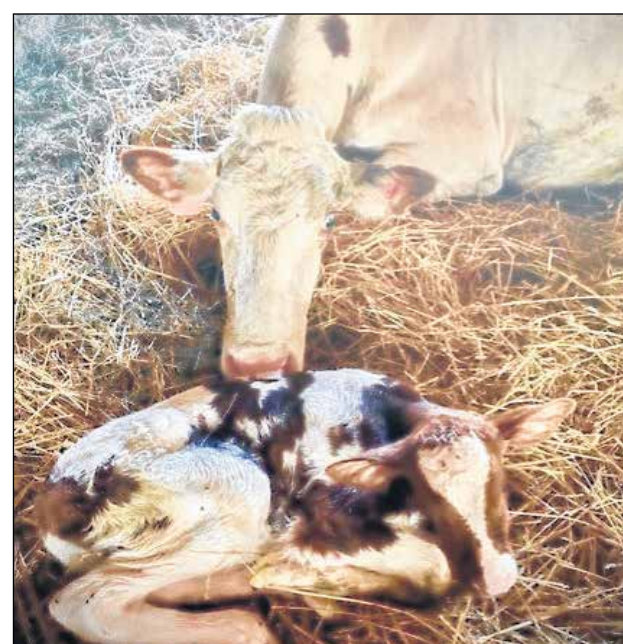
But an increase in production is not the only benefit from the grant-funded expansion. The current process to cool the milk before bottling involves a chiller unit that uses up to 600 gallons of water for every 45-gallon batch of milk processed. This is a strain on the farm’s water supply, which is sourced from a natural well. Moving forward, the creamery will use very little water with the glycol-based 1,000 gallon cooling tank.

“As farmers, we want to be good stewards of natural resources. Our water supply is vital, not only to the creamery, but also for the care of our cattle. Each milk cow can consume

up to 50 gallons of water a day, so it’s important to have adequate resources to give our herd the best care possible,” explained Donald.

There are other exciting changes, as well. New milk flavors are going to be added to the creamery. Cotton candy, banana split, chocolate raspberry and salted caramel will be introduced later this year. And the new retail space will allow the creamery to offer a more diverse selection of dairy products, as well as some “cow-themed” merchandise for customers to peruse.

“We are aiming to have the expansion complete in time to host the 15th Annual Leadership Clinton Dinner in the Fields on August 10th,” said Jackie. “This is also the 60th anniversary of the farm. My father-in-law (Howard) celebrated his 89th birthday this month and we are glad that he is here to celebrate the progress we’ve made in growing the family farm.”



# OUR COMMUNITY IMPACT



610 West Main Street  
Wilmington, OH 45177  
937.382.6611

[CMHRegional.com](http://CMHRegional.com)



In my short tenure at Clinton Memorial Hospital (CMH), I've often witnessed the skill and compassion of our team members as they work to bring hope and healing to the patients who entrust us with their care. That's why we're here, and why we've been here for more than seven decades.

CMH is much more than just one of the largest healthcare providers in Wilmington and Clinton County. We are also one of the area's largest employers, taxpayers, and charitable donors, and one of the largest contributors to the area's "safety net," as reflected by the millions of dollars of uncompensated, charitable care we provide each year. We embrace our vital role in the community and are proud to share some of the benefits of our partnership as detailed in this report.

Please read more below. And from all of us at CMH, thank you for choosing our hospital and for allowing us to be your partners in better health and a better Clinton County.

Sincerely,  
Tom Daskalakis, CEO  
Clinton Memorial Health

## In 2023, we...



added **113 employed, affiliated and telehealth providers**



made more than **\$600,000 in capital improvements**



distributed a **payroll of approximately \$35 million** to our 600+ employees



donated more than **\$7.5 million** in services to those in need



paid more than **\$7 million in taxes**

## 2023 Success Spotlight

Inviting the best possible providers into our community and supporting them is essential to ensuring access to high-quality care. In 2023, we added 113 providers in areas that include Adult Hospitalist, Anesthesia, Cardiology, Diagnostic Radiology, Emergency Medicine, Family Medicine, General Surgery, Radiation Oncology, OB/GYN, Orthopedic Surgery, Otolaryngology, Pain Management, Pathology, Pediatrics, Pulmonology, Radiation Oncology, Tele-Psych, Tele-Stroke and Urology.

By continually investing in our facilities, we're helping to ensure that we meet our community's evolving healthcare needs. Last year, we spent more than \$600,000 in capital improvements, including a rebuild of the East Clinton Medical Services clinic in Sabina and a refresh of our OB Suite.

We strive to create an environment where talent is recognized, job satisfaction is valued and our employees can effectively use their skills to provide high-quality care and service.

In 2023, we provided more than \$7.5 million in services to those in need of healthcare but without the means to pay.

We are proud to be a leader in the Wilmington area, and our dedication to ensuring fiscal responsibility extends to our hospital and community.





# Smith

## Funeral Home & Cremation Services

### Serving Clinton County for over 75 years

## Smith Funeral Home helps guide those in need through grief

Located at 327 N. South St. in Wilmington, Smith Funeral Home & Cremation Services is a trusted and respected establishment in the community, offering a range of services to help families navigate the difficult process of saying goodbye to their loved ones. The funeral home's grief services are designed to provide comfort, support, and guidance to those who are grieving, ensuring that they receive the care they need during this challenging time.

Included in the app is a Grief Plan program. It includes over 70 videos and 50 downloads on topics such as: surviving "grief bursts"; understanding your personal "grieving style"; exploring how long grief will last; dealing with grief, anger, regret and guilt; and learning what is normal vs. abnormal in grief.

The app also provides an easy way to check the funeral home's obituary listings, contact the funeral home, provide a review, and includes an uplifting Thought of the Day.

### How Guiding Grief Can Help

Meet your community of experts: Everyone's grief journey is different, and no one can answer all your questions. That's why Smith has gathered a community of experts who are intimately familiar with the grieving process. In this video, you will learn their stories. As they share solutions with you in these videos, you will be comforted that while no one understands what you're going through, they do have an appreciation for your pain and your questions.

**Beginning your grief journey:** It may seem like life will never return to normal after a loss. In this video, you will learn what has helped others on their journeys as you begin to walk your own path of healing.

**Finding your own path to healing:** It's not always easy to get the proper support from friends and family. Even the most well-meaning friends and family members often get it wrong. In this video, you'll learn how to manage their comments and how to create boundaries and time for personal grief.

**What are the biggest insights about grief?:** This video examines how to get practical about your own grief. Give yourself permission to grieve in the way most helpful to you. How you think you should be doing is often different from how you are actually doing.

### Potential Reactions to Grief

**Recognizing signs of depression:** Depression is one of the most common byproducts of grief. It can drain your energy and zap your will to continue forward towards healing. Experts share how to deal with the peaks and valleys and when to seek professional help and medication.

**The connection between grief and anxiety:** When we suffer the loss of a loved one, our entire life can change completely. This can be frightening and anxiety-inducing. Feeling anxious over a loss is as normal as it is manageable. Smith will help you avoid stressing about managing stress.

**Avoiding the guilt pit:** Most

**grieving people deal with feelings of guilt.** "Was there something more I could have done? Did he know how much I loved him?" Whether irrational or real, the Grief Guides share how to resolve these feelings of guilt.

**Men and grief:** Society makes it difficult for men to feel okay feeling vulnerable and sad. This video allows men to hear from other men who can help them manage and process their emotions in a healthy way – all while supporting other family members who may be grieving differently.

**Recognizing anger in myself and managing it:** Anger is a normal part of the grieving process, but it is important to not let it get out of control. Our experts share the different ways anger can manifest itself in grief and specific ways to manage it.

### Unique Grieving Situations

**Losing a child:** Nothing can prepare you for the loss of a child, and the grief will be felt forever. But how do you begin to move on? How do you grieve alongside your spouse and function around other parents? How do you care for your other children while keeping the memory of your child alive? Hear from those who faced these same questions.

**Losing a partner:** Losing a partner changes your whole world. You not only lose the love of your life but also your primary support system. Hear honest answers for widows and widowers to questions like, "How do I cope with all the ways my life has changed? How do I revise my life for one?"

**Coping with loss from an accident or other trauma:** Those who have had a loved one's life taken from them in an accident or other violent tragedy need special attention as grievers. It is important to work through the complexity of this grief. Grief Guides who have experienced everything from fatal car accidents to medical malpractice give details on how they coped with the unthinkable.

**Loss through suicide:** Losing a loved one through suicide has an extra set of challenges. Often, those grieving need more support but receive less. Hear how others have dealt with the difficulties of this kind of loss.

**Struggling with loss from substance abuse:** Death from overdose can come after years of fighting a battle with addiction or as a complete surprise. Hear how others deal with the stigma, build a supportive community, and carry a positive memory of their loved ones forward.

### Ways to Help with Healing

**Art therapy:** Sometimes, the grief is too painful to put into words. Art therapy isn't just for children. It can help adults express deep-seated feelings. As the licensed art therapist explains, you don't have to be an artist to benefit from this form of expression.

**Music therapy:** Listening to and making music can be helpful anytime we're going through something difficult. A licensed music therapist explains how performing and listening to music under the direction of a therapist can

help you work through your emotions as you grieve.

**Health & nutrition:** Grief causes the body to be in a stressed and inflammatory state. A registered dietitian shares how to handle overeating and undereating that happens during grief and gives ways to combat the nausea grievers often feel.

**Self-care:** The grieving process can be exhausting – both physically and mentally. It is important for those who are grieving to care for themselves, even when it feels like the last thing they want to do. Experts share ways to make it easier to take care of yourself when you don't even feel like getting up in the morning.

The app is completely free and confidential with Smith Funeral Home covering the cost for anyone in the community to download and use.

Smith Funeral Home & Cremation Services offers a range of other helpful services designed to make the process of planning a funeral or memorial service easier and less stressful.

The staff at Smith Funeral Home is committed to providing compassionate care and guidance to families during their time of need. With their range of grief services and personalized approach, they are dedicated to helping families create a beautiful and lasting tribute to their loved one. For more information about their services, please call 1-937-382-2323 or visit [smithandsonfuneralhomes.com](http://smithandsonfuneralhomes.com).

## Your Guide to Overcoming Grief

- Comprehensive Videos for Every Grief Journey
- 15 Experts Share Insights to Manage Grief
- On-Demand Access

## Guiding Grief™

REAL PEOPLE ▶ REAL HELP ▶ REAL HEALING

Visit Website



Don't tell someone to get over it;  
help them get through it.  
– Sue Fitzmaurice



Serena Hammond | News Journal photos

Susan Valentine-Scott, director of the Clinton County Convention & Visitors Bureau (left), and Melissa Hedrick, executive assistant, stand proudly in their new location at 58 W. Sugartree St. This relocation marks an exciting chapter for the bureau, offering enhanced visibility and accessibility for visitors seeking information about Clinton County or looking to rent The Venue.

# An exciting new chapter for Clinton Co. Convention & Visitors Bureau

By Serena Hammond  
shammond@wnewsj.com

The Clinton County Convention and Visitors Bureau has bid farewell to its former location and embarked on an exciting journey to a new, more accessible space at 58 W. Sugartree St. in Wilmington.

Bureau director Susan Valentine and Melissa Hedrick, executive assistant, both of the Clinton County Convention & Visitors Bureau, delved into the motivations behind this relocation and the promising prospects it brings.

“Our lease was up at our previous space, which ultimately worked better for us because the new location on 58 W. Sugartree St. is street level and has easy access for visitors looking for information about Clinton County,” Hedrick said. “When we were on the second floor, even though there was an elevator, we still had limited visibility. We have been here approximately five months and are delighted by the amount of people we see daily.”

Additionally, with the inclusion of a conference center in their new facility, the bureau looks forward to accommodating various events and gatherings, further solidifying their commitment to serving both the local community and visitors alike. Visitors seeking more information can explore the bureau’s offerings on their Facebook pages — Clinton County in Southwest Ohio, Rock the Block Wilmington, and The Venue Wilmington OH.

The decision to settle into their new abode was not solely about convenience; it was also a strategic move to enhance visibility and accessibility for visitors.

“The visibility on Sugartree Street is phenomenal! With TinCap across the street and The Escape as our neighbor, it works perfectly with our summer concerts and Rock the Block,” Hedrick explained.

Transitioning to a new location brings with it a host of opportunities and enhancements.

“The Venue is a bit smaller but has the same amenities as far as: oven,

refrigerator, large bar area with bar stools, tables/chairs, seating area with a TV, parking in the rear, and a conference room,” Hedrick said.

Despite its smaller footprint, the new space boasts all the necessary amenities to cater to the bureau’s needs and those of its visitors.

Ensuring a seamless transition for both visitors and staff was paramount during the relocation process.

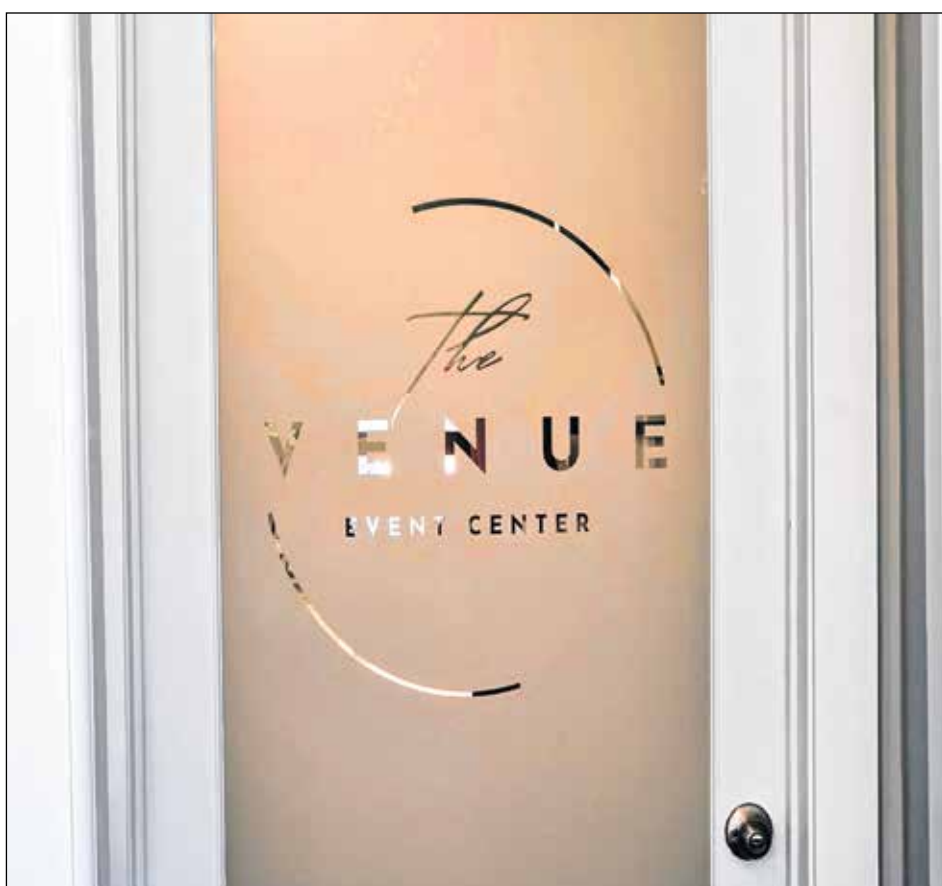
“Susan and I tease about being professional movers after doing it a few times over the years with the CVB, so we had a good handle on how things should work and what the process should look like,” Hedrick shared. “One of the first things we did at the new location was to ensure that visitors had access to our visitors guide and other local information/brochures. Our offices and front area were the first things completed in the moving process to serve our community in an efficient manner.”

Exciting plans and initiatives are already in the pipeline, promising a vibrant future for the bureau and its patrons.

“Our summer concert series, which will be on Sugartree Street except for one, has arrived,” Hedrick said. “The (remaining) dates are June 28 (in the Eagles parking lot) and July 12. Then our big event is Rock the Block on July 26 and 27. The Venue will be available to rent very soon, and we are very appreciative of the positive feedback that we have received thus far. The details are coming together, and a new rental contract is being established along with pricing for the space. We are hoping to have everything together for fall rentals.”

Reflecting on the significance of the bureau’s move, Hedrick conveyed a message of community engagement and hospitality.

“The Clinton County Convention & Visitors Bureau is here to serve our community as well as encourage visitors from all over to take advantage of all the great things Clinton County has to offer,” she said. “We invite anyone who has any questions about Clinton County or The Venue to call us at 937-382-1965.”



Take a peek inside the new venue of the Clinton County Convention and Visitors Bureau at 58 W. Sugartree St. in Wilmington.





IT'S FORD SUV SEASON! HEAD INTO BUSAM FORD AND CHECK OUT GREAT OFFERS ON AN EXCITING SUV LINEUP.



# New 2024's in stock now!

FREE Mobile Service Available!

Maintenance Pick-Up!

60 Minute or less car purchasing Experience!



You Can't spell Busam without USA



Welcome to Busam Ford *The Dealer Closest To Your Heart!*

1182 West Main St. Wilmington, OH 45177 • 937-556-6383 • busamford.com

AIM70361827



A part of the community, a part of your life.



## WILMINGTON

2333 Rombach Ave.

P.O. Box 930

Wilmington, OH 45177

937-382-2546

sfminsurance.com

AIM70369456



The Clinton County Foundation is a community foundation helping people and nonprofits make a lasting positive impact on our county through charitable investing and grant-making. Working at the intersection of generosity and opportunity, we're a team of local citizens committed to making our home a place where people will want to live, work, and grow for generations to come.

### Our Areas of Focus

We provide support where it's needed most. The Clinton County Foundation encourages a focus on three areas that deliver the greatest impact for charitable giving.



Bringing out the best in our community.

PO Box 831, Wilmington, OH 45177 937.566.1634 clintoncountyohiofoundation.org

AIM70369714

# OUR COMMUNITY IMPACT

## SPONSORSHIPS AND DONATIONS

It was our pleasure to be able to support several activities and organizations during the past year, including the following:

- » Clinton County Chamber of Commerce
- » Clinton County Community Action
- » Clinton County Farmers Market
- » Clinton County Health Alliance
- » Clinton County Workforce Collaborative
- » Leadership Clinton
- » Main Street Wilmington
- » Wilmington City Schools
- » Wilmington College
- » Wilmington Parks & Recreation



## 2023 BOARD OF TRUSTEES

### OFFICERS

**Dr. Philip Aschi**, *Chair*, Urologist, Clinton Memorial Hospital

**Tom Daskalakis**, *Secretary, CEO*, Clinton Memorial Hospital

### MEMBERS

**Dr. Surmeet Bedi**, Nephrologist, Private Practice

**Jim Brady**, Superintendent, Wilmington City Schools

**Jake DeHart**, CFO, Merchants National Bank-Hillsboro

**Terrance (Terry) Habermehl**, Auditor, Clinton County

**Jack Powell**, Vice Chairman, Liberty Savings

**Dessie Rogers**, Executive Director, Clinton County Chamber of Commerce

**Dr. Bruce Staley**, Internal Medicine, Clinton Memorial Hospital

## ECONOMIC IMPACT

**Charity and other uncompensated care** ..... **\$7,569,366**  
*(includes charity care, uninsured discounts and uncompensated care)*

**Community benefit programs**..... **\$119,672**  
 Financial contributions..... \$10,500  
 Professional development..... \$57,249  
 Tuition reimbursement ..... \$15,125  
 Physician recruitment ..... \$36,798

**Taxes paid**..... **\$7,059,745**  
 Property and other taxes ..... \$520,373  
 Provider taxes ..... \$4,149,294  
 Payroll taxes ..... \$2,266,294  
 Local sales taxes ..... \$22,965  
 State sales taxes ..... \$100,819

**2023 TOTAL: \$14,748,783**



610 West Main Street  
 Wilmington, OH 45177  
 937.382.6611

**CMHRegional.com**

*Charity care and other uncompensated care include charity care, uninsured discounts, and uncompensated care. Physician recruitment costs include recruitment costs and support of new physicians' initial practice establishment in the community. Payroll includes consolidated salaries, wages, benefits, and contract labor costs. Capital investments include facility expansions/renovations, equipment purchases, technology replacement, information technology additions/updates, and routine facility upkeep and maintenance. All references to "ScionHealth" or the "Company" used in this release refer to subsidiaries of Knight Health Holdings, LLC.*

*Clinton Memorial Hospital is part of ScionHealth, a health system focused on driving innovation, serving its communities, and investing in people and technology to deliver compassionate patient care and excellent health outcomes. Based in Louisville, ScionHealth operates 94 hospital campuses (76 specialty hospitals and 18 community hospital campuses and associated health systems) and six senior living locations in 28 states. ScionHealth strives to deliver on its promise of high-quality, patient-centered hospital care by empowering the hands that heal to do what they do best. For more information, please visit ScionHealth.com.*

WF1155826, 2024





**...from our farm to your fridge**

**Clinton County's Only Grade A Dairy**  
**Open to Customers 9AM - 9PM Daily**



**Whole Milk Bottled in a Variety of Sizes and Flavors**

Whole milk is bottled and processed right on the farm after morning and evening milking. The milk is non-homogenized, using a gentle, low heat pasteurization process that preserves the flavor. Because the milk is non-homogenized, cream will rise to the top. This requires shaking well before drinking or skimming the cream off the top. Our flavored milks, Chocolate, Mocha, Orange Creamsicle, Strawberry and Vanilla Cake, are always in stock with seasonal specials offered throughout the year. You will find no artificial ingredients or dyes in our flavored milks.



**Handmade Milk Soaps, Lotions and Candles**

These products are made off the farm, using our own milk, with the simplest ingredients and natural fragrances of essential oils. There are no artificial dyes and products are packaged in containers made from recycled plastic or glass.



**Home Delivery Options**

Everything stocked at the Creamery can be delivered to your doorstep for a \$6 fee, with no minimum order. Greater Cincinnati's delivery day is Tuesday and Columbus' delivery day is Thursday. Visit our website to view our on line store and see if your zip code is located in our 26-county delivery area. Herd Share owners can also have their share delivered to their home.



**Invest in Our Herd**

Individuals who are interested in obtaining raw milk can invest in a herd share and receive a local supply of fresh, raw milk from a Grade A Dairy...whether you visit the farm for a pick-up or have it delivered to your doorstep. Interested individuals can visit our website or give us a call to learn more about this opportunity.



**Pasture-Raised Beef**

Our beef is 96% lean, from the ground hamburger to the choice cuts of steak. We raise our cattle on the pasture, adding forage and grains during the winter months when the grass is dormant. Our beef is processed at a local USDA-certified facility so you don't have to worry about antibiotics, added hormones, growth stimulants or animal by-products. We also offer customers the opportunity to purchase whole, half and quarters of beef that can be processed to the customer's specifications.



**Cheese, Butter and Sweets**

From rolled butter to handmade candy and breads, customers will appreciate the flavor from using simple ingredients sourced locally. Bakery items are made by the Miller Family in Hillsboro, and for our cheese lovers, we stock a wide selection of cheese wheels and chunks, processed by Ohio's award-winning Pearl Valley. Made with milk sourced from local dairies, these natural cheeses are tasty for all your snacking and cooking needs.



**New Horizon**  
 Farm & Dairy

**Happy Cows Creamery at New Horizon Farm**

1103 Hodson Road • New Vienna, Ohio 45159 • 937-218-COWS • moocows@fuse.net • www.happycowsatnewhorizon.com

# Your Partner in *Advanced Planning*



Pr-planing your final arrangements is one of the most thoughtful decisions you can make for your loved ones. By making the arrangements of your choosing in advance, you spare your family the stresses of making difficult decisions during their time of grief and mourning. In addition, making your final arrangements now will protect you and your loved ones against future price increases.

*Traditional Funerals • Non-Traditional Services • Cremation Choices  
Advanced Planning • Personalization Options • Pet Cremations •  
Green-friendly Burials*

## Pre-Arrangements

You have time to plan for: Weekends • Vacations • Retirement • Weddings  
but have you planned for the inevitable?

No one likes to think about death. It's not something we schedule, and that's the point. The only thing certain about life is that it will end. Afterwards there are so many questions and decisions that must be made.

Do I want a traditional service? What type of memorial did I prefer?  
What about a will? What special requests do I have?

These are just a few of the decisions and questions which death forces upon us  
sooner or later.

The advantages of planning ahead:

Express your own wishes and personalize your funeral services, grant yourself peace of mind. Eliminate the decision making, questions, and if you so choose, the financial burden, for your family. Save money by guaranteeing today's prices against the future cost of inflation.

 **Smith**  
Funeral Home &  
Cremation Services  
Serving Clinton County for over 75 years

*At Smith Funeral Home & Cremation Services  
we can answer your questions and help you  
plan for the future. Contact us today at  
1-937-382-2323 or [smithfh@earthlink.net](mailto:smithfh@earthlink.net),*

[www.smithandsonfuneralhomes.com](http://www.smithandsonfuneralhomes.com)